

ramé-hart Oscillator

Model 100-28



Oscillator

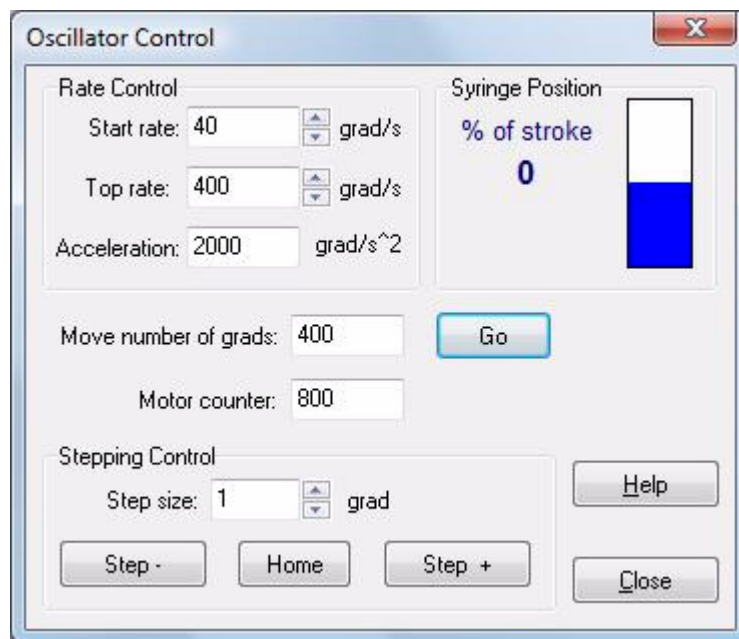
The ramé-hart Oscillator provides precisely controlled periodic oscillatory deformation of sessile and pendant bubbles in order to allow for the measurement of surface dilatational elasticity and viscosity using the axisymmetric drop and bubble shape method. Designed to sit inline between the Automated Dispensing System and the final dispensing tip or needle, the Oscillator is motor-driven and fully software controlled using ramé-hart DROPimage v2.4 or higher software. The Oscillator requires an Automated Dispensing System and current-generation Model 250-F1 or 500-F1 or a legacy system that has been sufficiently upgraded. DROPimage Advanced includes a methods editor which incorporates an array of parameters for controlling the frequency, acceleration, timing and steps of the oscillation commands. This product includes (1) one year parts and labor warranty.

What's in the box: Oscillator, serial cable, power cable, interconnect tubing, one 50uL syringe (other sizes available), stroke-adjustment tool, and detailed User Guide.

Specifications

Size	6 x 6 x 6 in (150x150x150mm)	
Weight	7 lbs / 3.2 kg	
Standard Syringe	50µL	
Stroke Volume	0-250µL*	
Oscillatory Frequency	0-25Hz software-controlled	
Drive System	Stepper Motor and Controller	
Manual Stroke Adjust	Yes	
Required Software	DROPimage Advanced v2.4 or up	
Measures and Logs	A0, A(amp), Omega (ω), Fi1, Gamma, G(amp), Fi2, E', E'', tg(d), A/G; E' and E'' can be plotted as a Function of frequency.	
Communications	RS232 Serial	
Power Supply	110 or 220 VAC	
Options	Syringe 250µL	p/n 100-22-25
	4mm Bubble Adapter	100-28-11
	2mm Bubble Adapter	100-28-12
	Adapter for 100-07	100-28-13
	Replacement Tubing	100-22-726172

* requires optional 250µL syringe.



ramé-hart instrument co · www.ramehart.com · carl@ramehart.com · 973-448-0305 · fax 0315

PO Box 400 · Netcong · New Jersey · 07857 · USA



$$\sigma = F(d_s/d_b) d_c^2 g |\rho_1 - \rho_2|$$

