

# ramé-hart Automated Dispensing System

Part No. 100-22



## Automated Dispensing System (p/n 100-22)

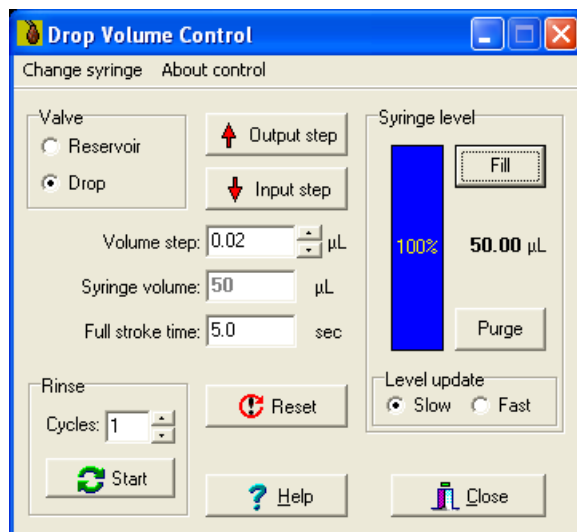
The ramé-hart Automated Dispensing System is a precise software-driven tool for dispensing sessile and pendant drops for static and dynamic measurements. This tool can be used to measure advancing and receding contact angles. The Automated Dispensing System has been optimized to work with ramé-hart DROPimage software (Standard and Advanced). A standalone dispensing program is available (on request) for users of a manual ramé-hart goniometer or other non-ramé-hart instruments. The hydraulic system employs a disposable tip which keeps the syringe and piping free of contaminants. Tips can be switched quickly to change from one test fluid to the next. This tool increases the accuracy of drop dispensing and ensures precise and highly repeatable measurements. Note that this product is included with ramé-hart Models 290 and 590.

**What's in the box:** Dispensing tool, serial cable, power cable, tip adapters for 30 $\mu$ L and 250 $\mu$ L tips and needle adapter, one set of tubing, and starter set of disposable tips. Stand-alone software on request.

## Specifications

Size	6 x 6 x 6 in (150x150x150mm)	
Weight	7 lbs / 3.2 kg	
Standard Syringe	250 $\mu$ L	
Syringes Supported	50,100,250,500,1000,2500,5000 $\mu$ L	
Smallest Step	0.02 $\mu$ L*	
Step Resolution	0.01 $\mu$ L	
Accuracy	+/- 0.002 $\mu$ L	
Maximum Speed	1.0 sec for full stroke	
Communications	RS232 Serial	
Power Supply	115 or 230 VAC	
Options	Syringe 50 $\mu$ L	100-22-50
	Oscillator**	100-28
Spares	Set of Spares for ADS	100-22-SPARES
	Tubing, Blunt End	100-22-1067
	Tubing, Interconnect	100-22-20731013
	Tips 30 $\mu$ L/250 $\mu$ L	100-22-30T/250T
	Fixture Adapter	100-22-20-xx
	Needle Adapter	100-22-37

\* requires optional 50 $\mu$ L syringe; 0.08 $\mu$ L is smallest step with standard 250 $\mu$ L syringe. \*\* requires DROPimage Adv.



ramé-hart instrument co • [www.ramehart.com](http://www.ramehart.com) • [carl@ramehart.com](mailto:carl@ramehart.com) • 973-448-0305 • fax 0315

19 Route 10 East • Suite 11 • Succasunna • New Jersey • 07876 • USA